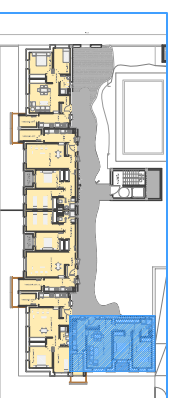


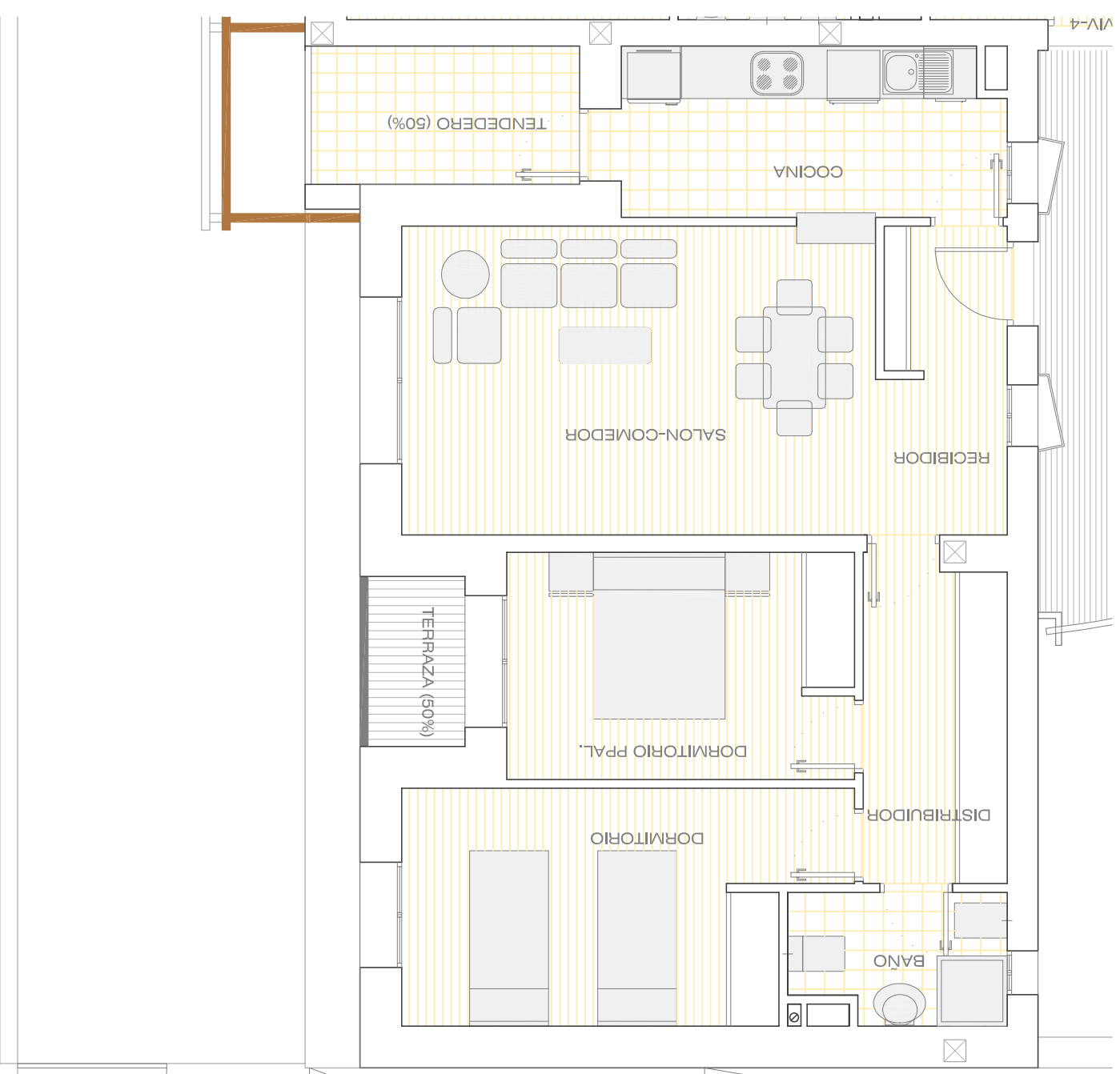


ALZADO

|                              |                           |
|------------------------------|---------------------------|
| <b>SUPERFICIE CONSTRUIDA</b> | <b>81,29m<sup>2</sup></b> |
| SALON-COMEDOR                | 18,99m <sup>2</sup>       |
| COCINA                       | 8,37m <sup>2</sup>        |
| DORMITORIO PPAL.             | 10,29m <sup>2</sup>       |
| DORMITORIO I                 | 13,22m <sup>2</sup>       |
| BAÑO                         | 3,84m <sup>2</sup>        |
| DISTRIBUIDOR                 | 5,60m <sup>2</sup>        |
| RECIBIDOR                    | 4,80m <sup>2</sup>        |
| TENDEDERO 50%                | 2,00m <sup>2</sup>        |
| TERRAZA 50%                  | 1,41m <sup>2</sup>        |



# PLANTA PRIMERA VIVIENDA TIPO 1



ESTE PLANO NO TIENE CARACTER CONTRACTUAL.